







- Two Bedroom Apartment
- Overlooking the River Themes
- Lounge with Balcony
- Modern Fitted Kitchen with Integrated Appliances

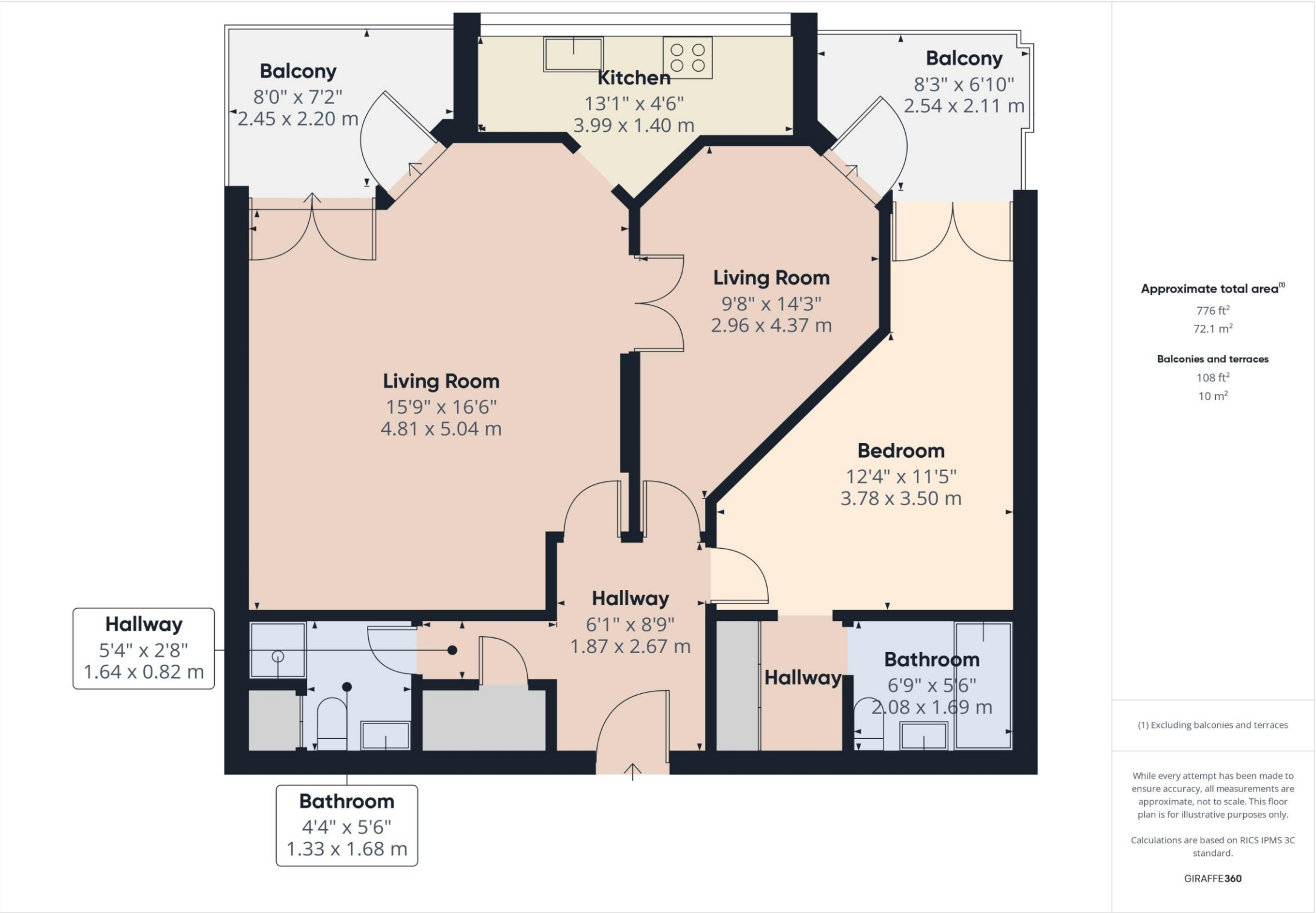


Set within the prestigious Burrells Wharf development, this beautifully presented two-bedroom apartment offers tranquil riverside living just moments from Canary Wharf. Situated on the upper ground floor, the home boasts sweeping views of the River Thames and benefits from a share of freehold. Recently refurbished to an exceptional standard, the interiors reflect a modern, high-spec finish throughout. The property opens with a welcoming entrance hallway featuring elegant hardwood flooring and a large storage cupboard with plumbing for a washing machine.

The bright and spacious lounge is enhanced by downlighting and double-glazed doors that open onto a generous balcony overlooking the water. The contemporary kitchen is well-equipped with a range of fitted wall and base units, integrated oven, hob and dishwasher, perfectly positioned to enjoy the scenic river view while cooking or washing up.

There are two generously sized double bedrooms, both with direct access to the balcony. The principal bedroom includes a dedicated dressing area and a stylish en suite with a full-sized bath and overhead shower.

A separate shower room off the hallway provides added convenience, making the layout ideal for both residents and guests. Residents of Burrells Wharf enjoy a wealth of exclusive amenities, including secure underground parking, a 24-hour concierge service, and access to a private pool, spa, sauna, and gym. Tucked away along the riverbank and away from busy roads, the development offers exceptional peace and quiet. Yet, it remains superbly connected—just over a mile from Canary Wharf, with easy access to the DLR, Jubilee and Elizabeth lines, and the Thames Clipper for a scenic commute. Nearby, Mudchute Park and Farm and the Greenwich foot tunnel offer green escapes and weekend adventures right on your doorstep.



These details are for guidance only and complete accuracy cannot be guaranteed. If there is at any point, which is of particular importance, verification should be obtained. They do not constitute a contract or part of a contract. All measurements are approximate. No guarantee can be given with regard to planning permissions or fitness for purpose. No apparatus, equipment, fixture or fitting has been tested. Items shown in photographs are NOT necessarily included. Interested Parties are advised to check availability and make an appointment to view before travelling to see a property.